

Wall Isolated system



Product Introduction

NOISESTOP® isolated wall WB-2-14 is a high performance isolated wall bracket made from cold rolled steel sheet and high resilient pad.

WB-2-14 has very high loading, low resonance frequency, and high damping ratio features, made it a perfect solution to reduce sudden structural vibration.

Application

- Bedroom
- Home theatre
- Conference Room
- Multipurpose Hall
- Recording Studio
- Office, etc.

Features

- Low Cost
- Easy to Install.
- Fire Stop Safety Design
- Resistance to Corrosion

Acoustic Performance

Tested in accordance with ASTM E90-09

Item	Test Standard	Test Result
STC	ASTM E90-09	60
R _w	Test Standard	60 dB

Test data of STC=60 result

Product	Impact Sound Pressure Level (dB)					
	125 Hz	250 Hz	500 Hz	1k Hz	2k Hz	4k Hz
WB-2-14	41	50	57	65	74	78

Suggested Layout

Product	Suggest centre to centre distance
WB-2-14A	1000x600mm, 1000x800mm
WB-2-14B	600x800mm, 800x800mm

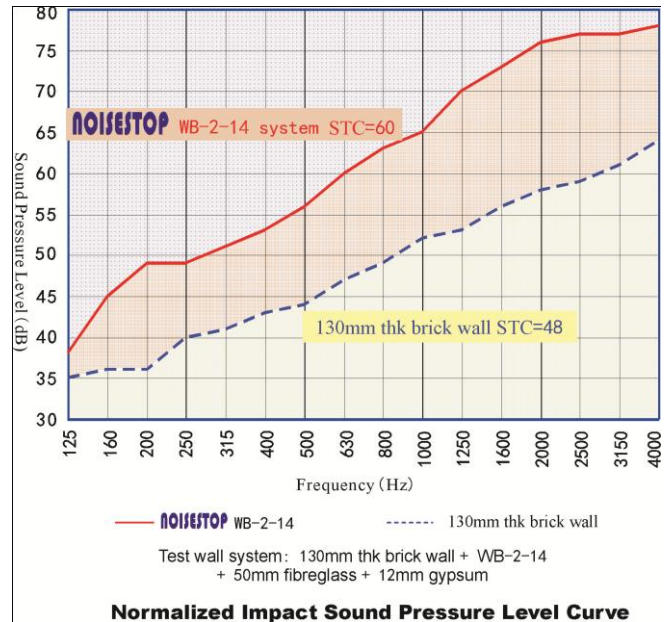
Product Specification

Model	Size	Colour
WB-2-14A	75x70x110mm	Silver & Black
WB-2-14B	75x70x110mm	Silver & Mix



WB-2-14A (Black color)

WB-2-14B (Mix color)

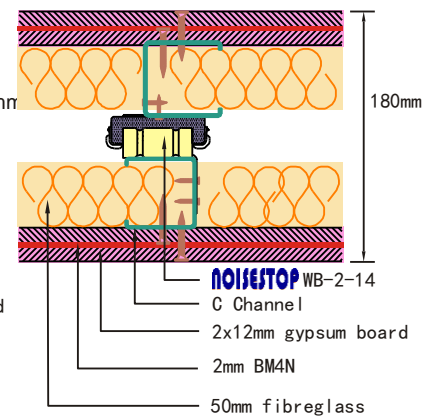
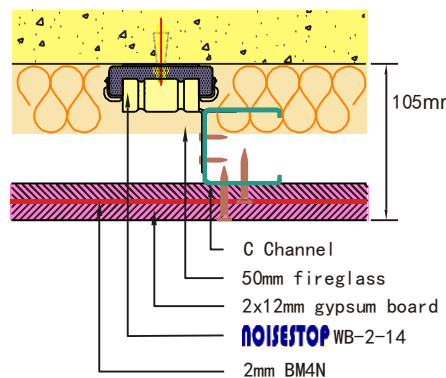
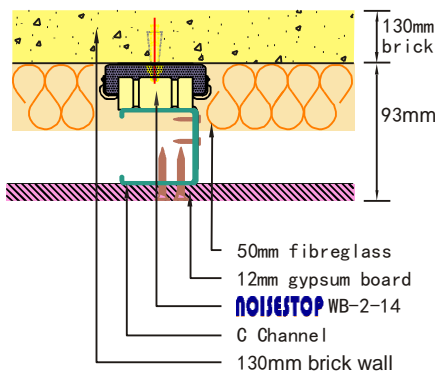
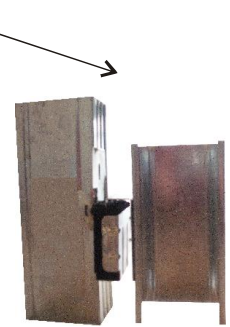
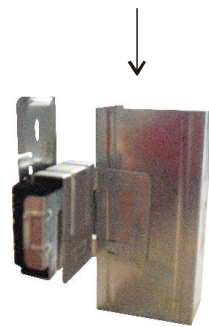
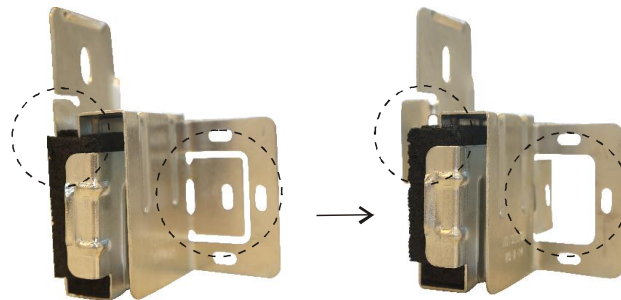
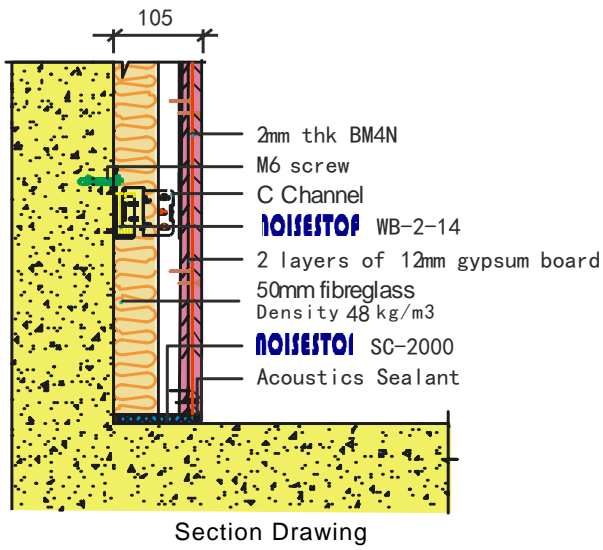


Nanjing Jinao Tower

Architectural Acoustics (Holdings) Limited

2/F Po Cheong Comm. Bldg, 29 Prat Avenue, Tsimshatsui, Kowloon, Hong Kong
 Tel.: +852 2367 3232 Fax.:+852 2724 8001 Email: sales@aa-hk.hk

Installation



STC60 Test Configuration